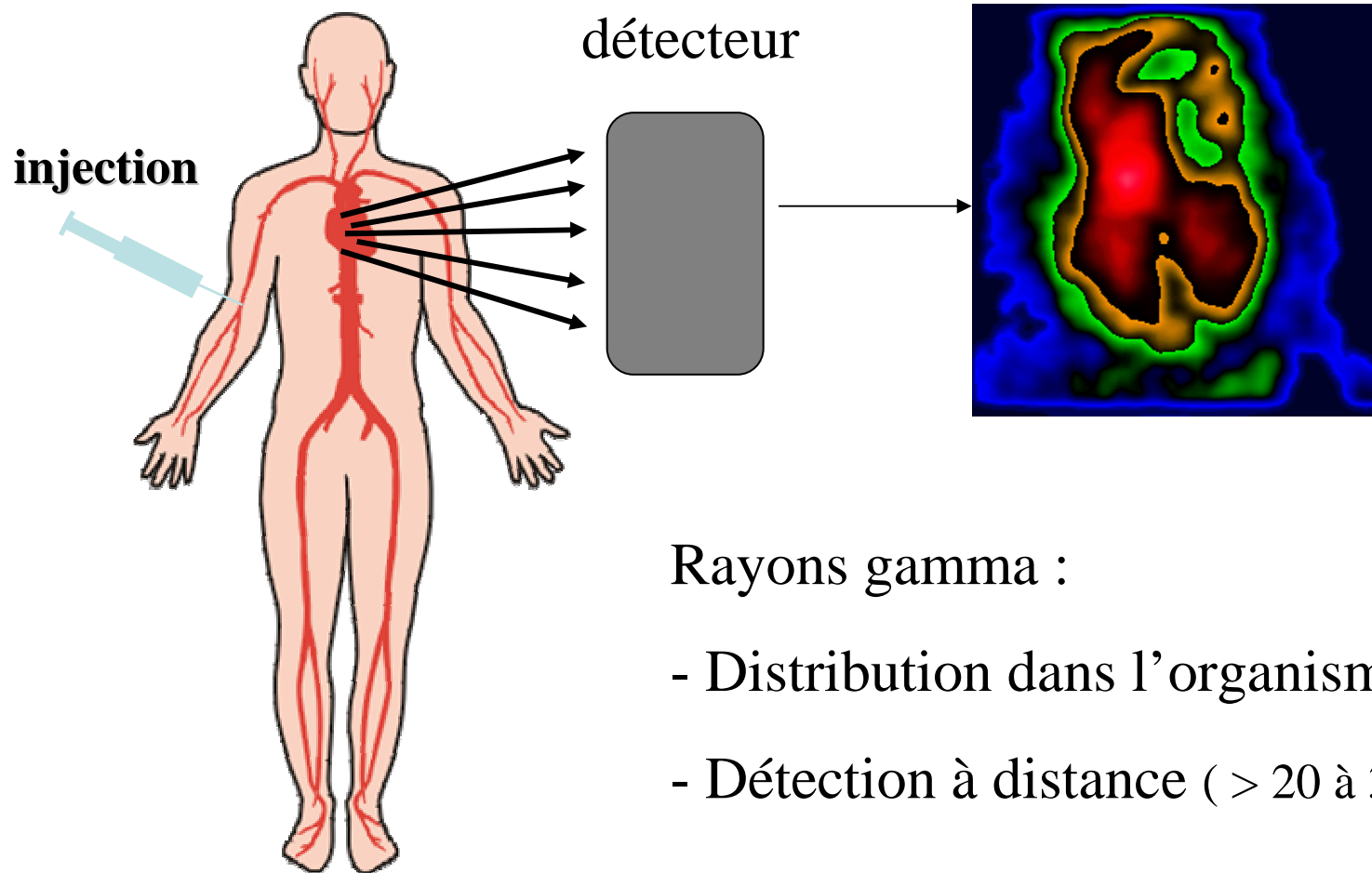


# LA SCINTIGRAPHIE OSSEUSE EN 2012

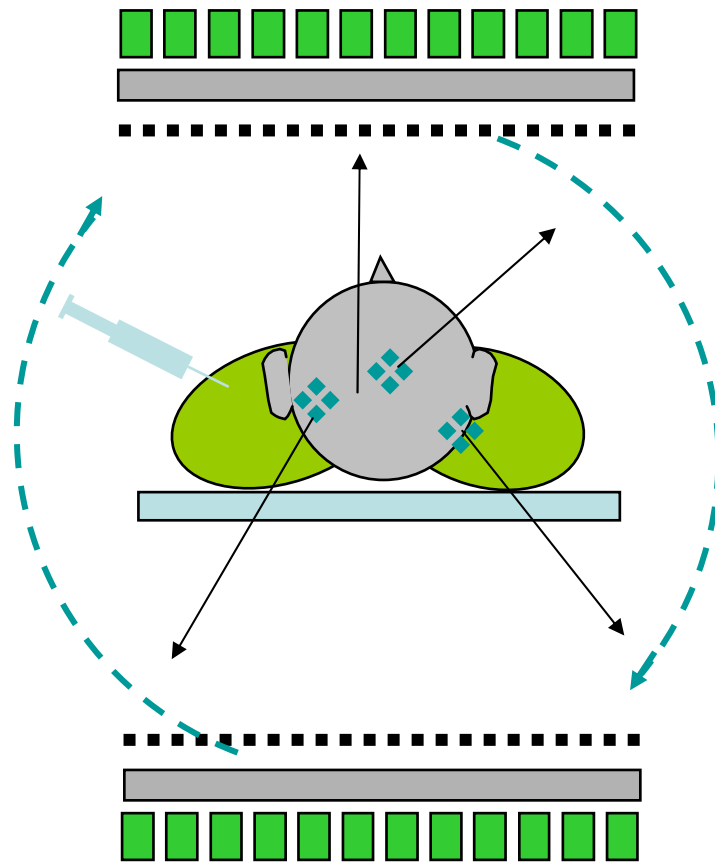
# Principe de la scintigraphie en 2009



Rayons gamma :

- Distribution dans l'organisme
- Détection à distance ( $> 20$  à  $30$  cm)

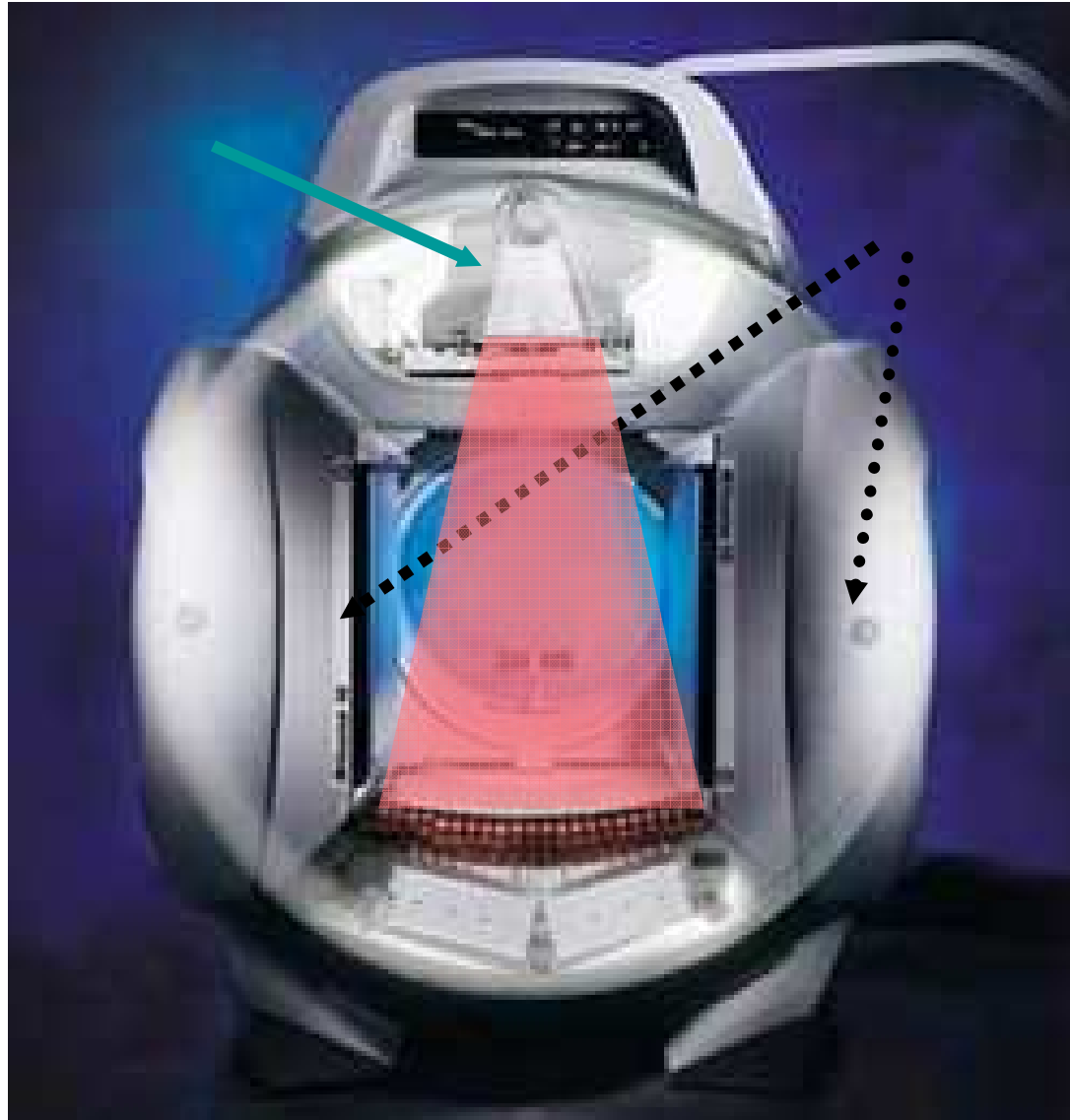
**2 têtes**



**angulation :  
180°, 90°  
ou variable**

# TEMP corrigé par RX

**Tube**  
**Rayons X**



**Têtes**  
**gamma**  
**caméra**

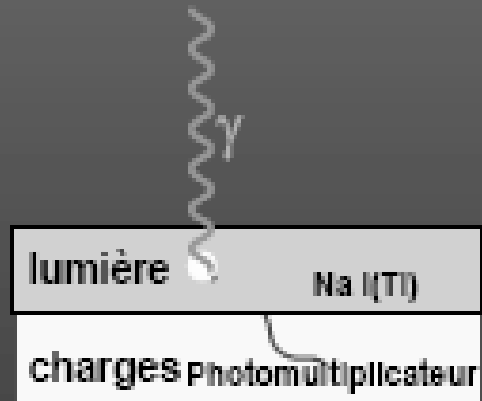
# TEP - TDM



# EN 2012

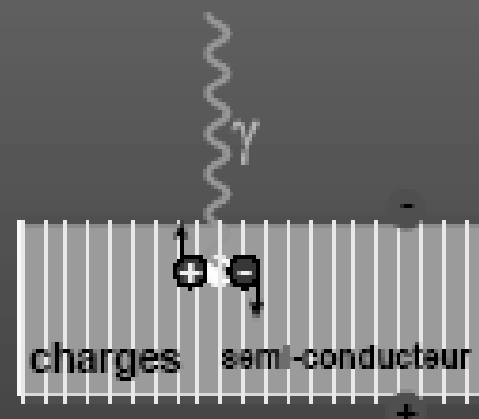
## UN NOUVEAU MILIEU DETECTEUR

Détection indirecte



1500 charges  
à 140 keV

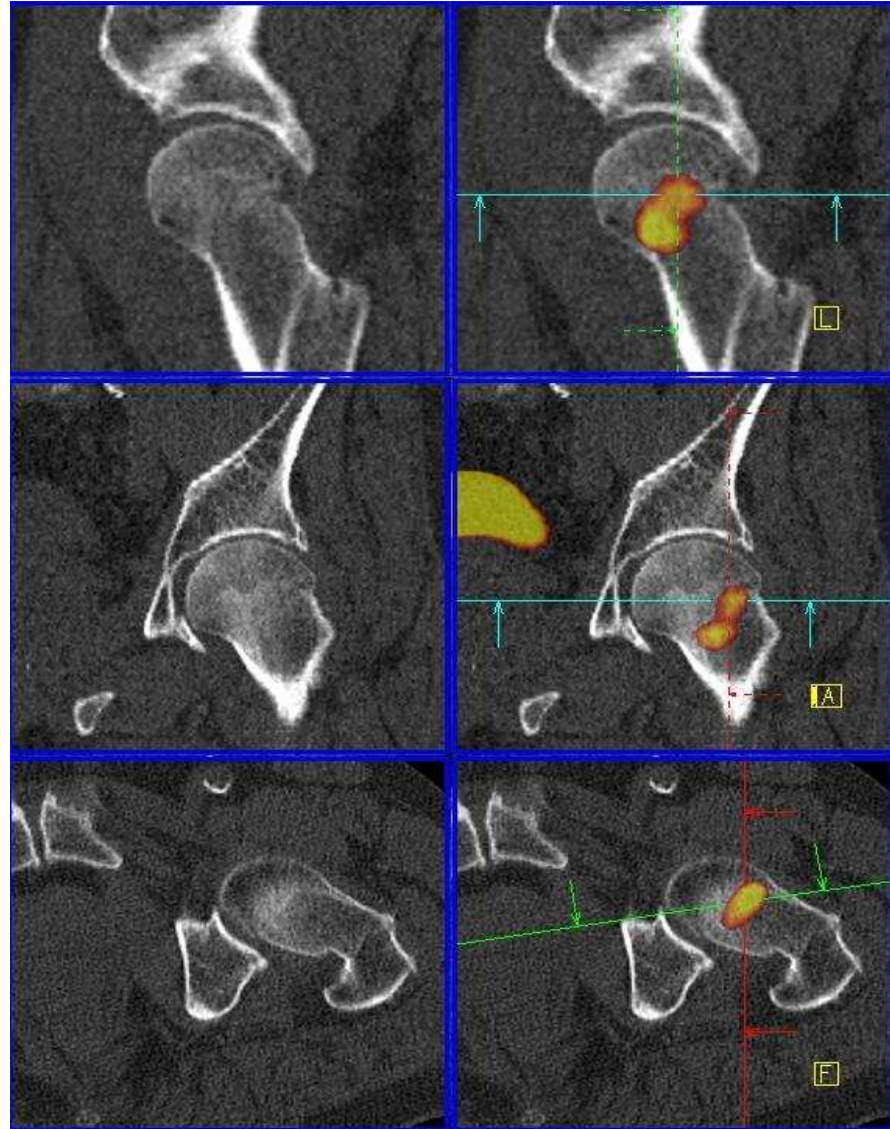
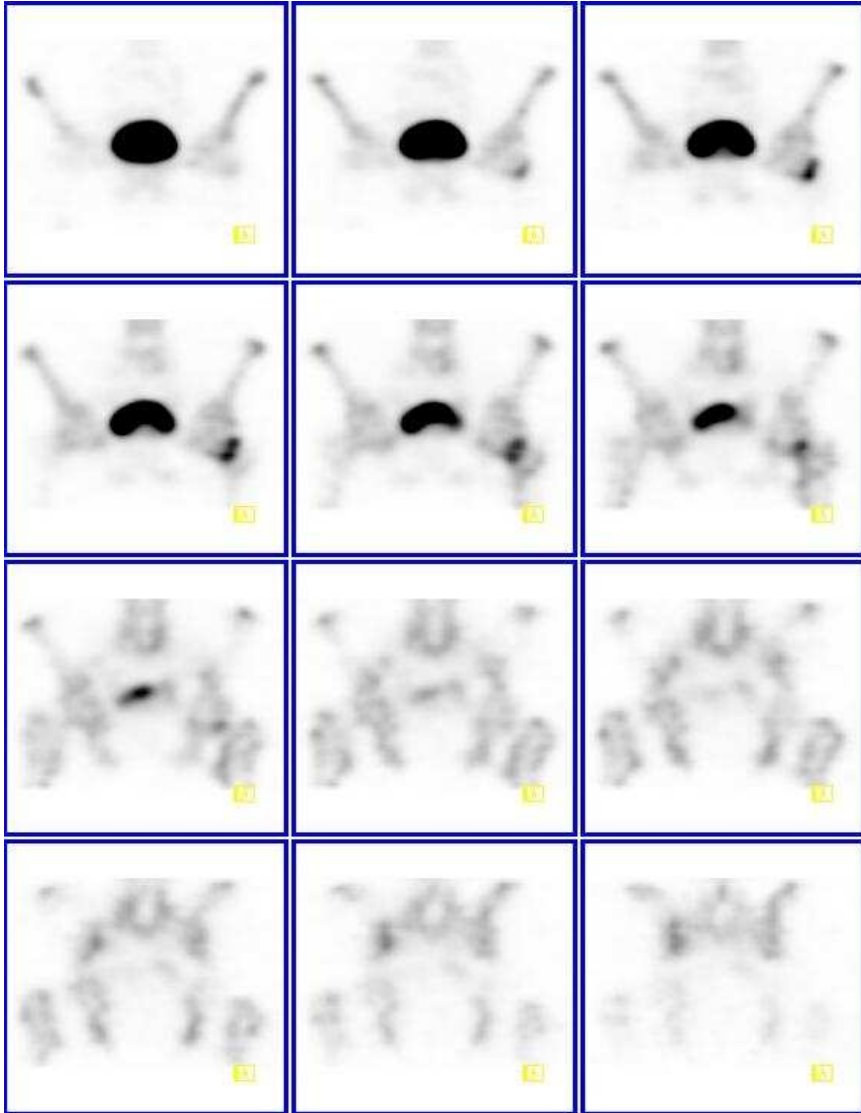
Détection directe



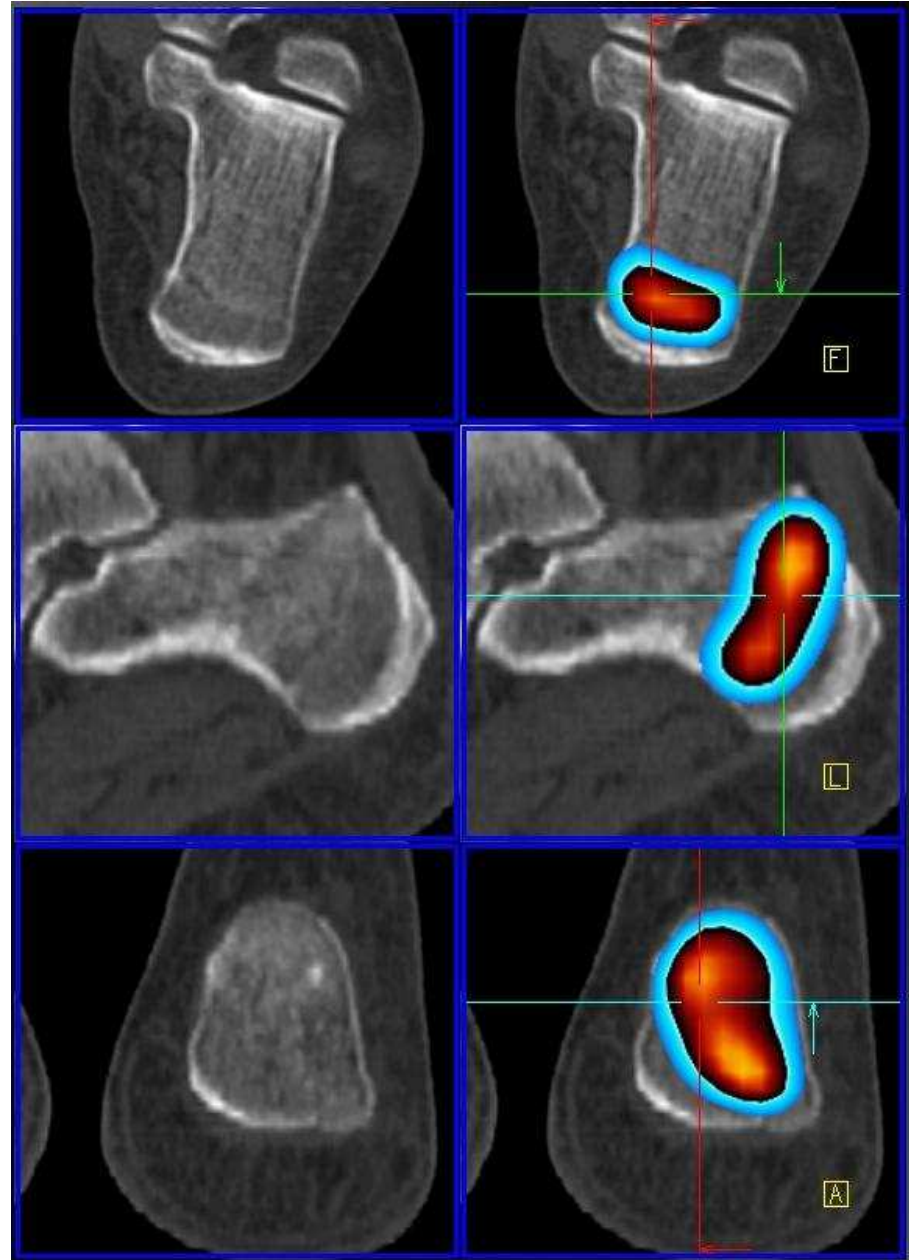
30 000 charges  
à 140 keV

**X 20**

# FUSION



# FRACTURE CALCANEENNE





# FRACTURE ASTRAGALE

